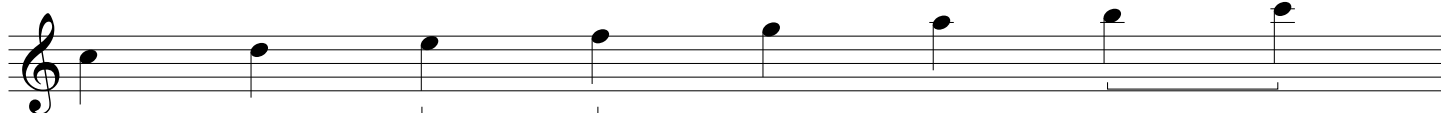


Major Scale Modes

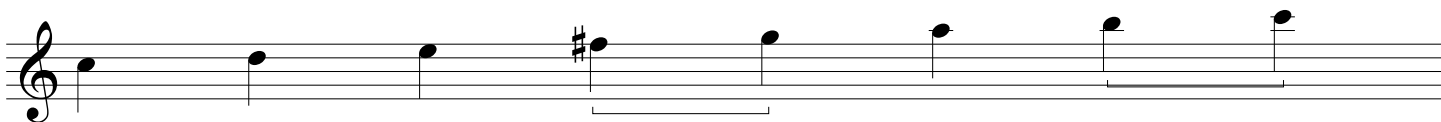
From Bottom Note

1 2 3 4 5 6 7 1

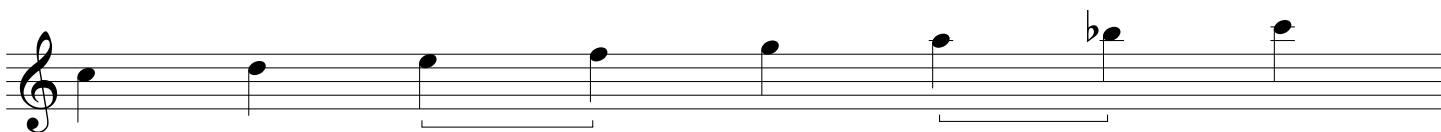
C Major 1-1 CMaj7 / C6



C Lydian 4-4 [#4] CMaj7(#4) / CMaj7(#11)



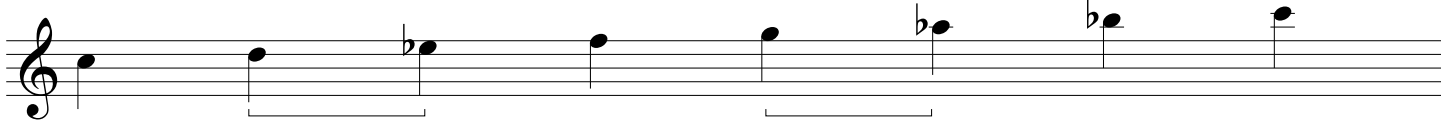
C Mixolydian 5-5 [b7] C7 / C9



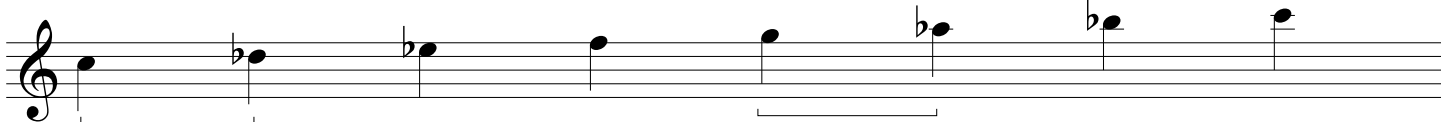
C Dorian 2-2 [b3 & b7] Cm7 / Cm9



C Aeolian 6-6 [b3, b6, b7] Cm7



C Phrygian 3-3 [b2, b3, b6, b7] Cm7 / Cm7(b9)



C Locrian (7-7) [b2, b3, b5, b6, b7] Cø7

